

# Getac

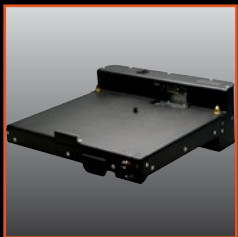
Rugged Mobile Computing Solutions

## B300

### Fully Rugged Notebook



- 6<sup>th</sup> Generation Intel® Core™ i7/i5 vPro™ Processor
- 13.3 " Getac QuadraClear® Sunlight Readable Display up to 1400 Nits
- Up to 30 Hours of Battery Life with Dual Battery System
- Enhanced Enterprise Security with optional Intel vPro, Windows Disk Encryption, TPM 2.0 and many more multi-factor authentication options
- Extreme ruggedness with 4ft operating drop rating, vibration and sand resistant and operating temperatures of -29°C to 60°C



Vehicle Dock



Office Dock





# B300 Notebook

## ALL PURPOSE 13.3" FULLY RUGGED NOTEBOOK

Our most popular model, the B300 rugged notebook has been called "The Best Rugged Laptop on the Market". With state-of-the-art processors, incredible battery life and one of the brightest displays in the industry, the 5th generation B300 is the go-to ruggedised notebook for users that work in some of the most extreme conditions on the planet.

### Customised Off-The-Shelf

The fact that we own our design and manufacturing process means that Getac can customise units to almost any configuration if the customer requires but we have two standard configurations of the B300 that should meet the majority of end users needs.

### B300 BASIC MODEL (See back page for spec)

#### For the facility based mobile worker

The standard basic model of the B300 is designed for the mobile worker who needs the longer working day offered by the dual-battery and fully rugged credentials of the B300 but, perhaps being based indoors, does not require an ultrabright sunlight readable display.

With a range of accessories available as well as industry leading warranty, service and support options, this can be a complete mobile computing solution.

### B300 PREMIUM MODEL (See back page for spec)

#### For the on-the-road mobile worker

The standard premium model of the B300 is designed for the mobile worker who needs the extra brightness of Getac's sunlight readable technology. With optional dedicated GPS and 4G/LTE, as well as Bluetooth® and tri-pass-through dock connection, this is the choice of workers who need to be connected wherever they are. Getac's own innovative antenna technology and the ability to connect to a vehicles high-gain antenna ensure a maximum of signal strength and a minimum of coverage dropouts.

### Docking Stations\*\*

| SKU / Part Number | Short Description  | Antenna       | Specifications (H x W x D)    | USB 3.0 | Ext. VGA | LAN | Serial | Audio I/O | DC in Jack |
|-------------------|--|---------------|-------------------------------|---------|----------|-----|--------|-----------|------------|
| GDVNG6            | Gamber Johnson Docking Station with Replication Inc car charger (11-16V, 22-32V)                     | No            | 124.5 x 315 x 312.5<br>2.36kg | 4       | 1        | 1   | 2      | 1 Each    | 1          |
| GDVPG6            | Gamber Johnson Docking Station with Replication & Dual Pass Through Inc car charger (11-16V, 22-32V) | Dual RF (TNC) |                               | 4       | 1        | 1   | 2      | 1 Each    | 1          |
| GDOFK2            | Office Dock with AC adapter  | No            | 94 x 330 x 124.5 mm           | 4       | 1        | 1   | 2      | 1 Each    | 1          |

### Passive Cradles\*

| SKU / Part Number | Short Description                         | Specifications (H x W x D)      |
|-------------------|---|---------------------------------|
| GDVMG6            | Gamber Johnson cradle with screen support | 124.5 x 315 x 312.5 mm / 2.36kg |

# ACCESSORIES

## Power Accessories

| SKU / Part Number | Short Description                              |
|-------------------|--|
| GBM9X1            | 9-Cell Main Battery                            |
| GAA9K1            | AC Adapter with Power Cord                     |
| GCCK1             | External Dual Bay Main+ Second Battery Charger |
| GAD2X1            | Getac 11-16V, 22-32V DC Vehicle Adapter        |
| GAAFK3            | MIL-STD-461F AC adapter                        |
| GBS9X1            | Removable Media Bay Battery Pack               |
| GAD3L1            | Lind 12-16Vdc input Power Adapter              |
| GAD4L1            | Lind 12-32Vdc input Power Adapter              |
| 592GUK000030      | Lind AC/DC Adapter                             |



Power Accessories



Battery Charger

## General Accessories & Carrying Solutions

| SKU / Part Number | Short Description   |
|-------------------|---|
| GMPSX1            | Stylus Pen and tether for Touch Screen                        |
| GSH5X3            | Spare 500GB HDD with canister                                 |
| GSS1X1            | Spare 128GB SSD with canister                                 |
| GSS2X1            | Spare 256GB SSD with canister                                 |
| GSR5X1            | Removable Media Bay 500GB HDD                                 |
| GSR1X1            | Removable Media Bay 128GB SSD                                 |
| GSR2X1            | Removable Media Bay 256GB SSD                                 |
| GMPFX1            | Protection Film   |
| GMBCX1            | Carry Bag   |
| GSROX3            | Removable Super Multi DVD integrated Smart Card for media bay |



Stylus



Carry Bags



Batteries



Havis Vehicle Docks



Gamber Johnson Vehicle Dock



Office Dock



Vehicle Power Adapters

All specifications and descriptions are subject to change. Please confirm full description and specification when placing orders.

\* All cradles are supplied without power supplies

\*\* All Docking Stations are supplied without power supplies

Email: [sales-getac-UK@getac.com](mailto:sales-getac-UK@getac.com)

# B300 Fully Rugged Notebook

Getac recommends Windows.



## Specifications

|                                  |  |   |  |
|----------------------------------|--|---|--|
| <b>Operating System</b>          | Windows 10 Professional<br>Windows 7 Professional  | <b>I/O Interface</b>                      | Serial port (9-pin; D-sub) x 2<br>External VGA (15-pin; D-sub) x 1<br>Microphone (Mini-jack) x 1<br>Audio output (Mini-jack) x 1<br>DC in Jack x 1<br>USB 3.0 (9-pin) x 1<br>LAN (RJ45) x 1<br>HDMI x 1<br>External GPS antenna port (only with optional GPS) x 1<br>Docking connector (80-pin) x 1<br>Optional RF antenna pass-through for GPS and WWAN |
| <b>Mobile Computing Platform</b> | Intel® Core™ i7 Technology<br>Intel® Core™ i7-6500U Processor 2.5GHz<br>(Max. 3.1GHz with Intel® Turbo Boost Technology)<br>- 4MB Intel® Smart Cache<br><br>Intel® Core™ i7 vPro™ Technology<br>Intel® Core™ i7-6600U vPro™ Processor 2.6GHz<br>(Max. 3.4GHz with Intel® Turbo Boost Technology)<br>- 4MB Intel® Smart Cache<br><br>Intel® Core™ i5 Technology<br>Intel® Core™ i5-6200U Processor 2.3GHz<br>(Max. 2.8GHz with Intel® Turbo Boost Technology)<br>- 3MB Intel® Smart Cache<br><br>Intel® Core™ i5 vPro™ Technology<br>Intel® Core™ i5-6300U vPro™ Processor 2.4GHz<br>(Max. 3.0GHz with Intel® Turbo Boost Technology)<br>- 3MB Intel® Smart Cache | <b>Software</b>                           | Getac Utility<br>Adobe® Reader®<br>Optional Absolute DDS® Persistence  |
| <b>VGA Controller</b>            | Intel® HD Graphics 520 <sup>i</sup>  | <b>Security Feature</b>                   | Intel® vPro™ Technology<br>TPM 2.0<br>Fingerprint scanner<br>Smart Card reader (only with DVD Super Multi Drive)<br>Kensington lock  |
| <b>Display</b>                   | 13.3" TFT LCD XGA (1024 x 768)<br>700 Nits display<br>Optional 1400 nits QuadraClear® sunlight readable touchscreen display  | <b>Power</b>                              | AC adapter (90W, 100-240VAC, 50 / 60Hz)<br>Battery:<br>- Li-Ion smart battery (10.8V, 8700mAh)<br>(up to 15 hours of battery life) <sup>iii</sup><br>- Optional Multimedia Bay 2nd Li-Ion smart battery (10.8V, 8700mAh)   |
| <b>Storage &amp; Memory</b>      | 4GB DDR4 expandable to 16GB<br>SATA 500GB HDD<br>Optional SATA 1TB HDD<br>Optional SATA OPAL 2.0 SSD 128GB / 256GB / 512GB / 1TB   | <b>Dimension (W x D x H) &amp; Weight</b> | 303.5 x 263 x 60mm<br>3.5kg <sup>v</sup>   |
| <b>Keyboard</b>                  | LED backlit membrane keyboard<br>Optional LED backlit rubber keyboard  | <b>Rugged Feature</b>                     | MIL-STD-810G certified and IP65 certified<br>MIL-STD-461F certified <sup>iv</sup><br>Optional ANSI/ISA 12.12.01<br>Full magnesium alloy case<br>Shock-protected removable HDD<br>Vibration & drop resistant<br>Optional salt fog compliance<br>Optional night vision   |
| <b>Pointing Device</b>           | Touchscreen<br>- Optional pressure sensitive touchscreen<br>Touchpad<br>- Glide touchpad with scroll bar   | <b>Environmental Specification</b>        | Temperature <sup>iv</sup> :<br>- Operating: -29°C to 60°C<br>- Storage: -51°C to 71°C<br>Humidity:<br>- 95% RH , non-condensing  |
| <b>Expansion Slot</b>            | PCMCIA Type II x 1 + ExpressCard/54 x 1<br>SD card reader x 1  |   |  |
| <b>Multimedia Bay</b>            | Optional DVD super multi drive<br>Optional 2nd battery<br>Optional 2nd storage:<br>HDD 500GB / 1TB ; OPAL 2.0 SSD 128GB / 256GB / 512GB / 1TB  |   |  |
| <b>Communication Interface</b>   | 10/100/1000 base-T Ethernet<br>Intel® Dual Band Wireless-AC 8260; 802.11ac<br>Bluetooth (v4.2) <sup>ii</sup><br>Optional dedicated GPS<br>Optional 4G LTE mobile broadband   |   |  |

## Docking Solutions

|                     | Dimensions (W x D x H) | Serial Port | External VGA | Microphone | Audio Output | DC in Jack | USB | LAN | RF Antenna Connector |
|---------------------|------------------------|-------------|--------------|------------|--------------|------------|-----|-----|----------------------|
| <b>Vehicle Dock</b> | 354 x 315 x 98 mm      | 2           | 1            | 1          | 1            | 1          | 4   | 1   | 2 (Optional)         |
| <b>Office Dock</b>  | 329 x 125 x 94 mm      | 2           | 1            | 1          | 1            | 1          | 4   | 1   | --                   |

i. Share memory size may vary by different operating system and RAM size.  
 ii. Bluetooth performance and connectable distance may be subject to interference with the environments and performance on client devices, users may be able to reduce effects of interference by minimizing the number of active Bluetooth wireless devices that are operating in the area.  
 iii. Battery life testing conducted under MobileMark 2007. Battery performance will vary upon software applications, wireless settings, power management settings, LCD brightness, customized modules and environmental conditions. The battery has a limited number of charge cycles and may eventually need to be replaced by a Getac service provider. Battery life and charge cycles vary by use and settings.

iv. Weight varies from configurations and optional accessories.  
 v. MIL-STD-461F 90W AC adapter sold separately  
 vi. Tested by a national independent third party test lab following MIL-STD-810G



**Getac UK Limited**  
 Mitac House, Nedge Hill, Telford,  
 Shropshire, TF3 3AH, U.K.  
 Tel: +44 1952 207 200  
 Email: sales-getac-UK@getac.com  
 www.getac.co.uk

